

Mouse Monoclonal Antibody to

PIN1 (human)

clone 8C10

Order No.: 0112-100/PIN1-8C10

Size (µg) 100

Lot No.: 0112S



www.nanotools.de

orders & support:

email: info@nanotools.de

phone: +49-7641-455 670

fax: +49-7641-455 671

01/050307F

Isotype	Species Reactivity	Applications	Mol. Weight	Ref.Cell Line	Epitope	Immunogen
IgG1	human, mouse, dog	WB, ELISA	16 kDa	HepG2		recombinant human PIN1

Background and Specificity:

PIN1 is a peptidyl-prolyl-cis-trans-isomerase (PPIase) that specifically interacts with serine phosphate-proline or threonine phosphate-proline motifs. Upon binding, PIN1 isomerizes the peptide bond from cis to trans. Known substrates of PIN1 are several mitotic phosphoproteins (e.g. cdc25) as well as phosphorylated p53, phosphorylated β-catenin and phosphorylated tau protein. It is assumed that the isomerization of phosphoproteins regulates their biological function.

Mab PIN1-8C10 specifically recognizes human PIN1 in cell extracts at 16 kDa. The antibody is suitable for Western blot and ELISA applications

Related Products

Purification: The antibody was purified from serum-free cell culture supernatant by subsequent thiophilic adsorption and size exclusion chromatography.

Formulation: lyophilized from 1 ml 2 x PBS / 0.09 % Na-azide / PEG and Sucrose.

Reconstitution: Reconstitute with 1 ml H₂O (15 min, RT).

Stability: For long-term storage, freeze lyophilizate upon arrival (-20°C). Upon reconstitution, aliquote and freeze in liquid nitrogen; reconstituted antibody can be stored frozen at -80°C up to 1 year. Thaw aliquots at 37°C. Thawed aliquots may be stored at 4°C up to 3 months.

Avoid repeated freeze / thaw cycles

Positive Control: #0811: Cell lysate from untreated HepG2 cells

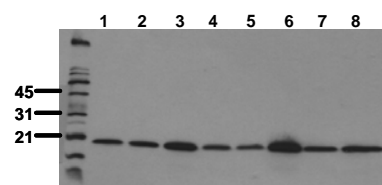
Immunoblotting: 0.5 µg/ml for HRPO/ECL detection
Recommended blocking buffer: Casein/Tween 20 based blocking and blot incubation buffer, e.g. nanoTools product #3031-500/CPPT or #3031-3000/CPPT.

Immunoprecipitation: ND

Immunocytochemistry: ND

ELISA: 0.1 µg/ml (protein ELISA); capture ELISA: ND

All products are supplied for research and investigational use only. Not for use in humans or laboratory animals.



Detection of endogenous PIN1

Whole cell lysates of serum starved tumor cells (20.000 cells per lane) were applied to SDS-PAGE and transferred to PVDF membranes. Immunoblots were probed with mab PIN1 8C10 (0.5 µg/ml) for 1h at RT and developed by ECL (exp. time: 30 sec).
 lane 1: A431; lane 2: A549; lane 3: SKOV3; lane 4: OVCAR5; lane 5: HaCaT; lane 6: PC3; lane 7: HeLa; lane 8: HepG2